

# Atlantic Wire Walls

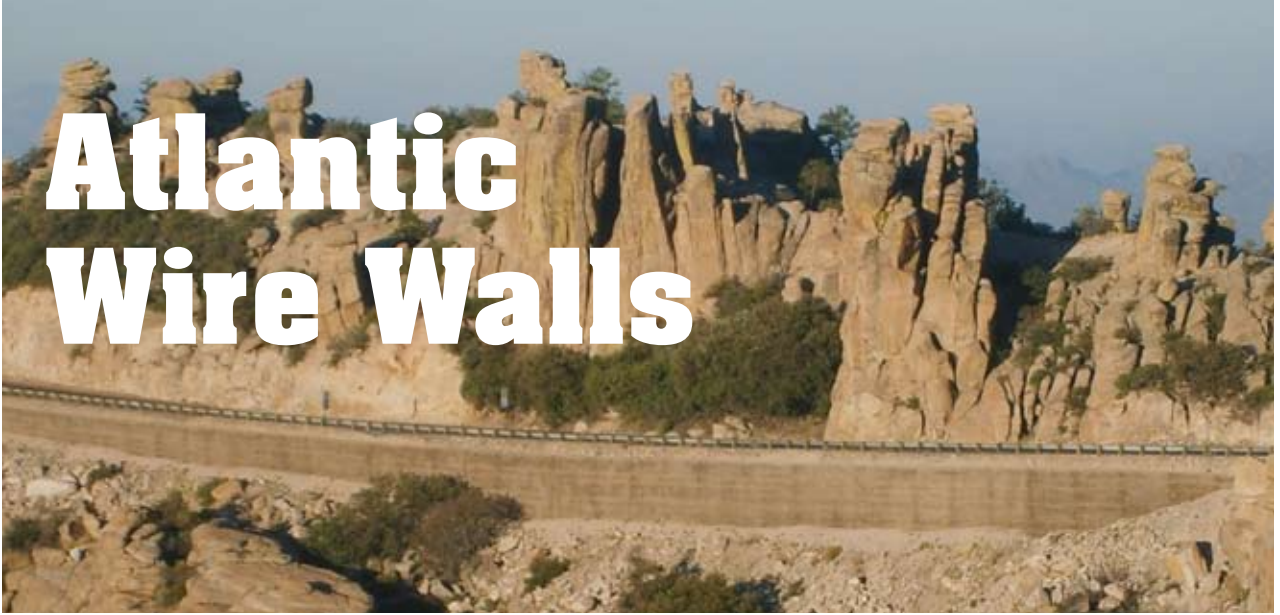


[www.atlanticcivil.com.au](http://www.atlanticcivil.com.au)



**We Support You.**

# Atlantic Wire Walls



Atlantic Wire Walls are ideal for:

- Headwalls
- Bridge abutments
- Retaining walls
- Steepened slopes

Atlantic Wire Walls provide fast, flexible and long lasting embankment retention for even the most challenging of jobs. The completed wall face of welded wire can be covered with air-blown mortar, seeded with grass or plants, or filled with rock to fit into any environment. The addition of pre-cast panels or cast-in-place fascia allows for a wide variety of architectural treatments.

## Strong

Atlantic wire walls are able to support a substantial capacity of static and dynamic loads. With its ability to resist the shock of seismic activity, wire walls are an effective choice for stabilizing unpredictable landscapes.

## Durable

Our wire walls will work for a large variety of projects, either for permanent or temporary use. The reliability and safety of the materials is unrivalled and will provide quality service for many years. We design for specified service life.

## Adaptable

Minimal site preparation and space is required to erect wire walls. This allows for quick and easy installation into the most complex landscapes, including slopes, marginal foundation conditions and large settlements.

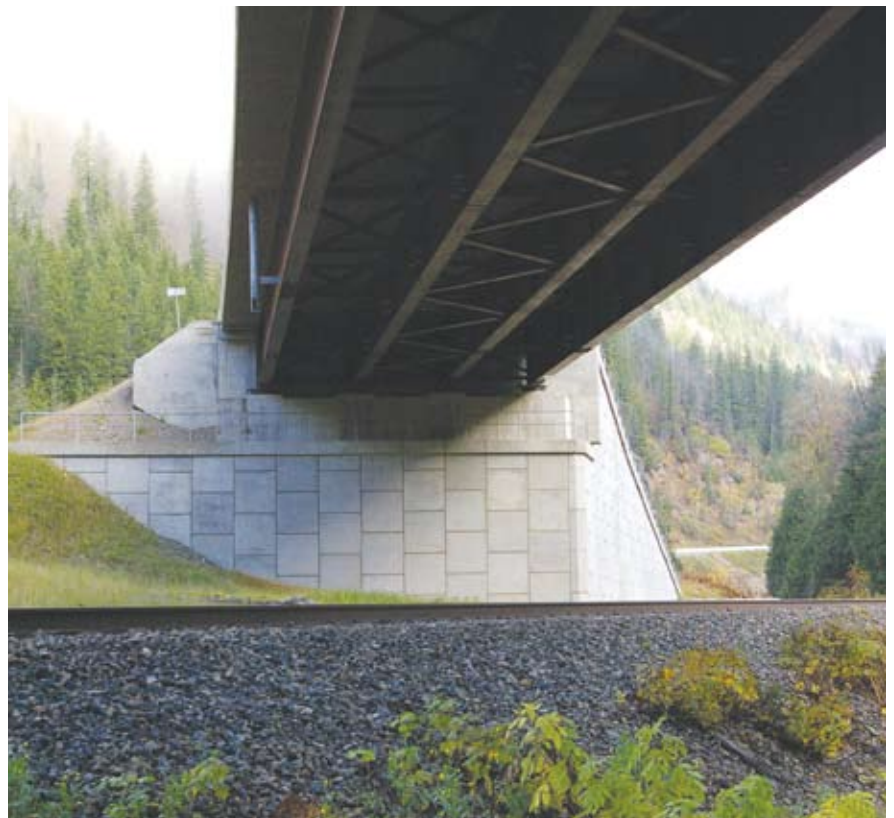
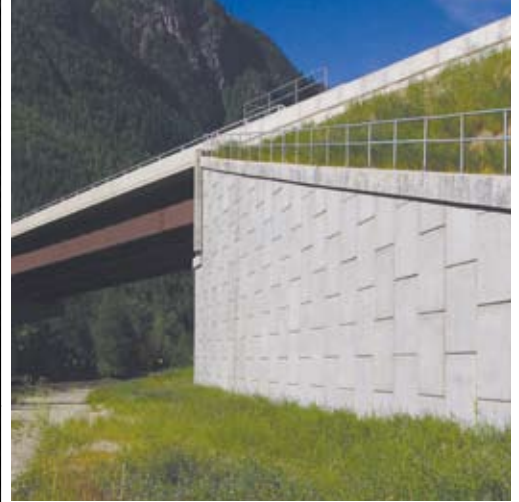
## Aesthetically Pleasing

Our wire walls are sure to fit in seamlessly, whether left exposed, vegetated, or treated with concrete fascia. With the choice of a variety of facings, they are able to meet any architectural requirement.

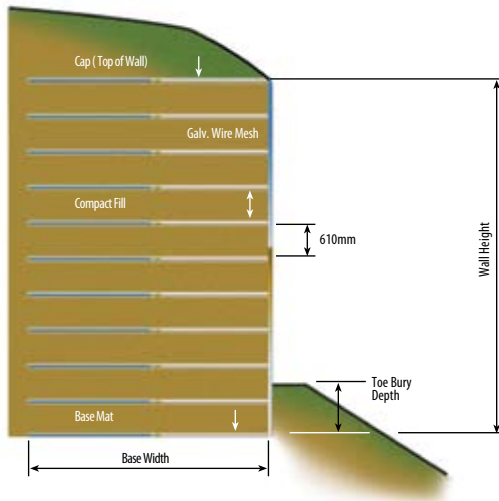


# Our Commitment

Atlantic Civil Products has built a solid reputation by providing professional support and innovative, high quality buried metal structures across Australia. We are now pleased to offer MSE (Mechanically Stabilized Earth) Walls.

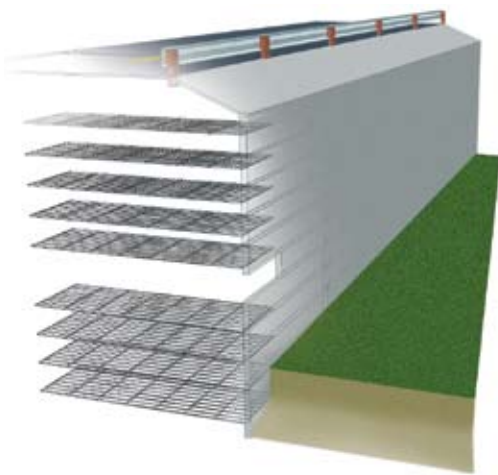


## Typical Section



## Atlantic Wire Walls

Atlantic Wire Walls are easily adaptable to curves, angles, or steps, and the mats may be cut to allow for the installation of culverts, or to accommodate site-specific requirements. Walls consist of welded wire mesh mats and compacted soil. Wall parts are lightweight and preformed to interlock, while mats are supplied in 610 mm vertical heights.

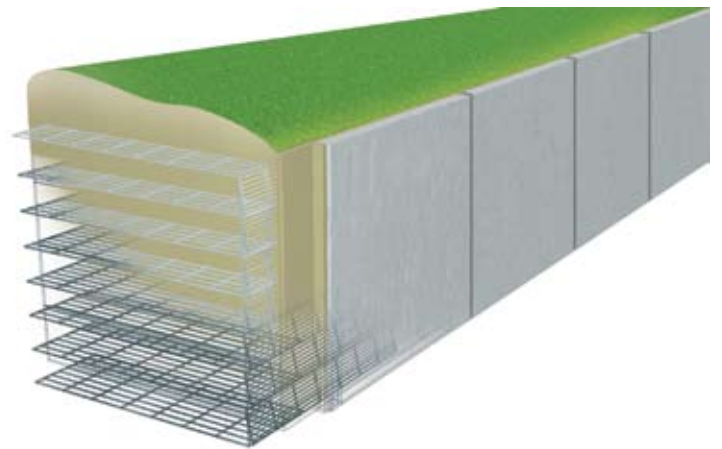


## Atlantic Wire Walls with Precast Panels

Precast panels offer a smooth or textured finish that is effective for a wide variety of architectural treatments. The standard panel is 1.5 m x 1.5 m. Our customized engineering design can help you speed up construction rates and improve compaction at the face of the wall.

## Atlantic Wire Walls with Cast-in-Place Fascia

Wire walls with cast-in-place concrete fascia provide strong advantages where especially poor foundation soils are expected. The concrete fascia varies between 150 - 200 mm thick and accommodates virtually any architectural finish, allows for differential settlement, and is easy to install.





## Design & Installation

### Atlantic Wire Wall with Wire Face

#### Site Preparation

Foundations must be graded level to a width that is equal to, or exceeds, the reinforcement mat lengths. If the wall structure is a bridge, backfill must be put in place immediately below the bridge abutment footing and compacted to 100% Standard Proctor Density. The foundation should be prepared as per the directions of the engineer and all excavation cuts & slopes should be in accordance with local regulations and project drawings.

#### Backfill

Backfill placement is to closely follow the erection of each course of reinforcement mats. No compaction equipment is to be operated on bare wire. Backfill should be compacted to 95% Standard Proctor Density and placed in horizontal lifts, in maximum 250 mm loose thickness. Only use smooth drum rollers, as sheep's foot rollers are not permitted.

#### Drainage

Perforated drainage pipe is to be wrapped in filter fabric and installed as directed by the engineer. Surface runoff is not to enter the wall construction area. Note: Drainage design is not included in the wall design.

#### Assembly

Wire mesh reinforcement mats and facing materials are to be placed in successive horizontal lifts as backfill placement proceeds. Vertical and horizontal tolerance should not exceed 50 mm when measured along a 3 m straight edge. Components include reinforcing mats, backing mats, stiffener mats, cap mats, hardware cloth, geotextile cloth, fasteners and other incidentals. Detailed engineering drawings are provided.

#### Atlantic Wire Wall with Precast Panels

A cast-in-place concrete leveling pad is required for the concrete panels and should be poured as shown on the

project drawings. Using an approved lifting device, precast panels are to be placed in successive horizontal lifts with soil reinforcement mats. Only precast concrete panels meeting project requirements can be used and careful handling of panels is critical, as damaged panels are subject to rejection. Note: Site preparation, backfilling procedures and drainage requirements are the same as wire face.

#### Atlantic Wire Wall with Cast-in-Place Fascia

A leveling pad is required to be cast at the toe of the wall and an anchoring system must be installed for the concrete forms. Reinforcing steel is then placed, the front form is erected and concrete is poured between 150 mm – 200 mm thick. Fascia is often placed the year after wall construction to allow for foundation settlement. Note: Site preparation, backfilling procedures and drainage requirements are the same as wire face.

## PRODUCTS AND SERVICES

- Super•Cor®
- Bolt-A-Bin®
- Multiplate™
- Super Span™
- Dur•A•Span®
- Atlantic Wire Walls
- Atlantic Precast Walls
- Modular Bridges
- Bridge Decking
- Box Culverts
- Geotextiles
- Guardrail Systems
- Helcor Pipe™
  - Galvanized
  - Aluminized Steel Type II
  - Polymer Laminated
- Buffa Tanks™
- Storm Water Detention
- Hi-Flo Pipe™
- Nestable Pipe
- Corrugated Polyethylene Pipe
- Steel Sheet Piling
- Hot Dip Galvanizing
- Water Control Gates

We offer engineering expertise and support on all of the above products.



**We Support You.**

### OFFICE LOCATIONS

#### Head Office:

Townsville  
13 Industrial Avenue  
Bohle QLD 4818 Australia  
Phone (07) 4774 5611  
Fax (07) 4774 6958

#### Western Australia

Sales & Service  
Phone (08) 9923 3422  
Fax (08) 9923 3437

#### Southern Region

Sales & Service  
Phone (02) 9522 9011  
Fax (02) 9522 7136

### The AIL group of companies:



Atlantic Industries Limited



BIG Manufacturing LLC



Atlantic Civil Products

Products and services are available throughout Australia, please visit [www.atlanticcivil.com.au](http://www.atlanticcivil.com.au) for contact information.

FOR ASSISTANCE IN PRICING, ORDERING, AND INSTALLATIONS,  
CALL TOLL FREE IN AUSTRALIA: 1 800-99-77-54  
OR EMAIL [SALES@ATLANTICCIVIL.COM.AU](mailto:SALES@ATLANTICCIVIL.COM.AU)